

PLAT OF
GALILEE
 A PLANNED UNIT DEVELOPMENT

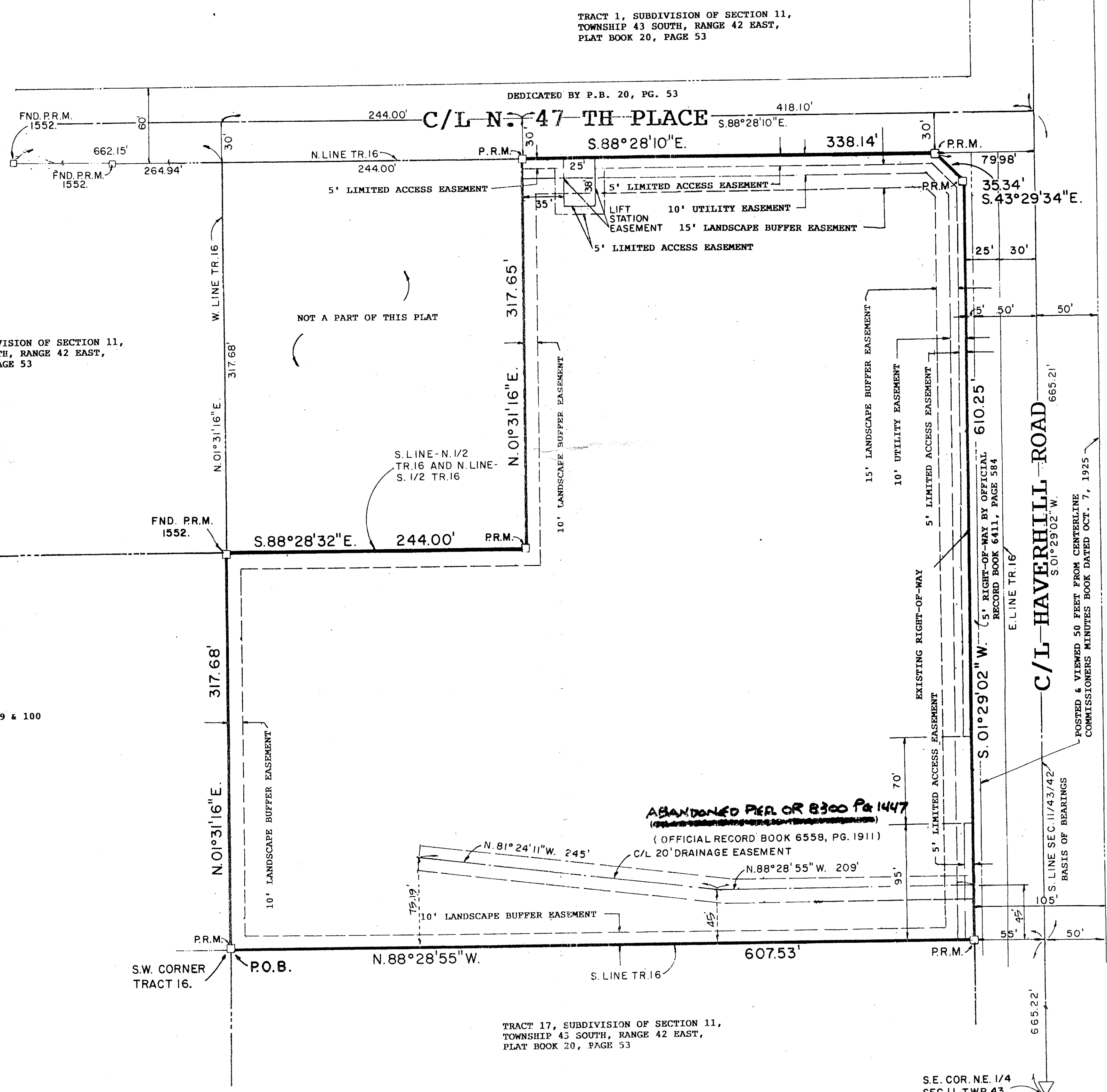
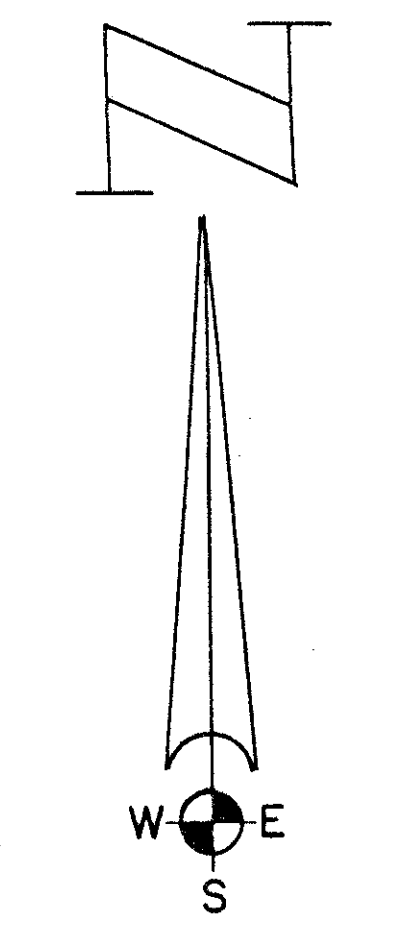
BEING A REPLAT OF A PORTION OF TRACT 16, SUBDIVISION OF SECTION 11, TOWNSHIP 43 SOUTH, RANGE 42 EAST, PLAT BOOK 20, PAGE 53, PALM BEACH COUNTY, FLORIDA.

SHEET 2 OF 2 AUGUST, 1993.

N.E. COR. SEC. 11,
 TWP 43, RGE. 42
 (BRASS DISK)

613-001

14



PET. 89-35 A
 2163.33 you bldg. #11 Bldg.
 2163.37 Bldg. #12

J. MORSE GERIATRIC CENTER
 PLAT BOOK 61, PAGES 51 & 52

TABULAR DATA

COUNTY PETITION NUMBER:	89-35 (A)
EXIST. AND PROPOSED ZONING DISTRICT:	RM/SE ACLF TYPE 111 (P.U.D.)
EXIST. LAND USE DESIGNATION:	HR8
TOTAL ACREAGE OF PROPERTY:	7.07 ACRES
TYPE OF USE:	ACLF TYPE 111
MUNICIPALITY:	PALM BEACH COUNTY
SITE AREA:	7.07 ACRES
NUMBER OF BEDS:	220
NUMBER OF ROOMS:	144

0613-001
 73/14

THERE MAY BE ADDITIONAL RESTRICTIONS THAT ARE NOT RECORDED ON THIS PLAT THAT MAY BE FOUND IN THE PUBLIC RECORDS OF THIS COUNTY.

This Instrument was prepared by: DONALD D. DANIELS
 PROFESSIONAL LAND SURVEYOR
 FLORIDA CERTIFICATE NO. 2608.

REF. 20-53	Donald D. Daniels, Inc.	SCALE: 1" = 50'
OFFICE: DEB	PROFESSIONAL LAND SURVEYORS	NO.: 90-004
DATE AUG, 1993.	725 N. A1A • Suite C111 • Jupiter, FL 33477 • 407-747-9894	SHT. 2 OF 2

S.E. COR. NE. 1/4
 SEC. 11, TWP 43,
 RGE. 42.

GALILEE

SUBDIVISION of Galilee
 CODE 73
 FLOOD ZONE B
 UN-0 #30
 TR 89-35
 PER FRAME
 11/13/93
 TAZ-174